

enhanced
by vision

transformer USB



Users Manual

Congratulations on your purchase of the Transformer. Enhanced Vision products are designed to give you the highest quality and convenience available.

Transformer is the most flexible and portable solution for reading, writing and viewing magnified images at any distance. Compatible with popular magnification software and the latest windows operating systems, Transformer's unique compact design is perfect for school, work, or home.

The Transformer product can enable people with low vision to read, write and to see objects at any distance. The unique design of this product provides the ultimate in flexibility and offers a large range of magnification with multiple viewing options that make reading easier than ever. Simply connect the Transformer to any laptop or computer.

Prior to using this system, please carefully read and follow the instructions provided within this booklet. A thorough understanding of the functionality will allow you to fully benefit from the flexibility and great features of this device.

If you have any questions, please contact the eye care professional or the supplier from whom you have acquired the unit.

FCC COMPLIANCE NOTICE

This device complies with Part 15 of the FCC Rules. Operation is subject to the following two conditions: (1) This device may not cause harmful interference, and (2) this device must accept any interference received, including interference that may cause undesired operation.

This equipment has been tested and found to comply with the limits for a Class B digital device, pursuant to Part 15 of the FCC Rules. These limits are designed to provide reasonable protection against harmful interference in a residential installation. This equipment generates, uses, and can radiate radio frequency energy and, if not installed and used in accordance with the instructions, may cause harmful interference to radio communications. However, there is no guarantee that interference will not occur in a particular installation. If this equipment does cause harmful interference to radio or television reception, which can be determined by turning the equipment off and on, the user is encouraged to try to correct the interference by one or more of the following measures:

- Reorient or relocate the receiving antenna.
- Increase the separation between the equipment and receiver.
- Connect the equipment into an outlet on a circuit different from that to which the receiver is connected.
- Consult the dealer or an experienced radio/TV technician for help.

Unauthorized changes or modification to this system can void the user's authority to operate this equipment.

If your Low Vision device has an option to connect to a TV, it must be used with shielded interface cables in order to meet FCC emissions limits for Class B digital devices. It is the responsibility of the user to use the shielded interface cables supplied with the equipment.

Chapter 1: Safety Precautions

General guidelines	2
Transportation	3
Care & Maintenance	3

Chapter 2: System Requirements

System Requirements	5
---------------------------	---

Chapter 3: Getting Started

Setting up your Transformer	6-7
Software installation	8-9
Keyboard shortcuts	10

Chapter 4: Package Contents & Controls

Package Contents & Controls	11-12
Accessories	11-12

Chapter 5: Using the Transformer

Viewing Modes	13-15
Adjusting magnification	16
Adjusting window divider	17-18
Capturing a still image	19
Viewing a stored image	20

Using 3rd party software	20
Using the Find	21
Using the Freeze	22
Using the Rotate	22
Color select mode	23
Upgrading your software	23

Chapter 6: Using the menu

Accessing the menu	24
Enable/Disable Window markers	25
Adjusting the Size/Position of Selected marker	26
Adjusting the Color Balance	27
Changing Favorite color modes	28

Chapter 7: Troubleshooting

Troubleshooting	29-30
-----------------------	-------

Chapter 8: Specifications

Specifications	31-32
----------------------	-------

Chapter 9: Warranty information

Warranty information	33-34
----------------------------	-------

Chapter 10: Other Enhanced Vision Products

Other Enhanced Vision Products	35-38
--------------------------------------	-------

SAFETY PRECAUTIONS

For your safety and to obtain the most benefit and life from the Transformer, please read these important safety precautions carefully.

General guidelines for use:

- ▶ Use the Transformer on a stable, level surface such as a solid desk or table, according to its intended design specifications.
- ▶ Always use the power supply provided with your package. Do not attempt to use any other power supply; doing so will harm the unit and void the warranty.
- ▶ Use care when using the Transformer outdoors. It should NOT be exposed to extreme or rapid changes in temperature or humidity.
- ▶ Do not place the Transformer near a radiator, heater or areas exposed to long hours of direct sunlight.
- ▶ Prevent the risk of electrical shock by NOT attempting to disassemble the unit. Please refer all service to an authorized repair facility.
- ▶ Do not use the Transformer in, near or around water. The Transformer is not designed to offer protection against contact with liquids of any kind.
- ▶ Do not use the Transformer during an electrical storm, lightning, or other severe weather.

- ▶ Do not use the Transformer near open flames, flammable materials or liquids.

Transportation:

- ▶ Transformer comes with a convenient carrying case for transport. To prevent the unit from being accidentally dropped and damaged, always return the Transformer to the carrying case while not in use.
- ▶ This product is intended to be used as a portable device. Please use care when connecting/disconnecting cables and accessories.

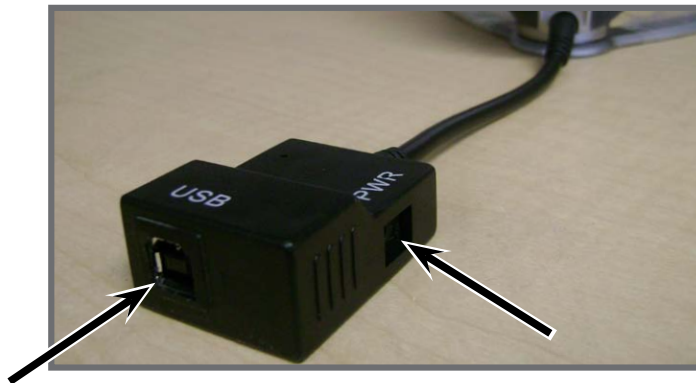
Care & Maintenance:

- ▶ Always turn the power OFF on the Transformer when the system is not in use.
- ▶ To prolong battery life, remove the battery from the Transformer if the system is not being used for one week or more.
- ▶ If needed, clean the surface of the Transformer with a soft damp cloth or an electrostatic dusting wipe. DO NOT use liquid cleaners on the plastic surfaces. No additional methods of sterilization or cleaning are recommended or required.

Susceptibility to Interference:

There may be temporary performance degradation of the Transformer when subjected to a strong magnetic and/or radio-frequency field, electrostatic discharge or transient electrical noise. An electrostatic discharge (caused by static electricity) may cause image distortion. If this happens, switch the unit off and try moving the unit to a different location.

- ▶ This product contains moving parts. Please use caution when moving the adjustable arm or when transporting the Transformer to avoid possible injury to hands and fingers.
- ▶ To avoid personal injury or damage to the Transformer, do not make any other type of connections to the camera input jacks other than those indicated in the photo below.



**SPECIFIED INPUT
CONNECTIONS ONLY!**

SYSTEM REQUIREMENTS

Laptop or Desktop PC Minimum Requirements:

Operating Systems:

Supported platforms for our Viewer application:

- *Windows XP (Service Pack 2 or higher)
- *Windows Vista (32-bit & 64-bit)
- *Windows 7 (32-bit & 64-bit)

Minimum requirements:

- OS: *Windows XP, *Windows Vista, or *Windows 7
- Processor: Intel Pentium M 1.5 GHz
- Memory: 512 MB
- USB 2.0 (high-speed): 1 available port required
- Graphics card: Must support DirectX 8.1
- Hard disk: 100 MB of free space available

In the interest of continuous improvement, product specifications and/or minimum system requirements are subject to change without prior notice.

Minimum recommended requirements for *Windows Vista & *Windows 7:

- OS: *Windows Vista, or *Windows 7
- Processor: Intel Core2Duo
- Memory: 2GB
- USB 2.0 (high-speed): 1 available port required
- Graphics card: Must support DirectX 9.0
- Hard Disk: 100MB of free space available

*Windows® is a registered trademark of Microsoft Corporation. All other brand names are trademarks of their respective owners.

1. Setup the Transformer

Remove the Transformer from the case. Place the unit on a flat, level surface such as a table or desk.

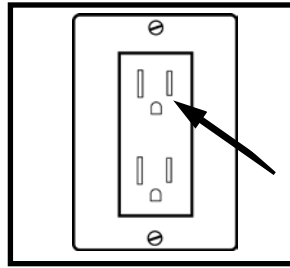


Figure 1

2. Connect the AC power

Connect the attached power cord to an available wall outlet. (See Figure 1) To offer additional protection during an electrical storm, a surge protector may also be used and is recommended.

3. Connecting USB to Computer

Connect USB cable that was provided to the back of your Transformer. Plug in the opposite end to your desktop or laptop computer. (See Figure 2). If this is your first time using this product, refer to page 8 for software installation

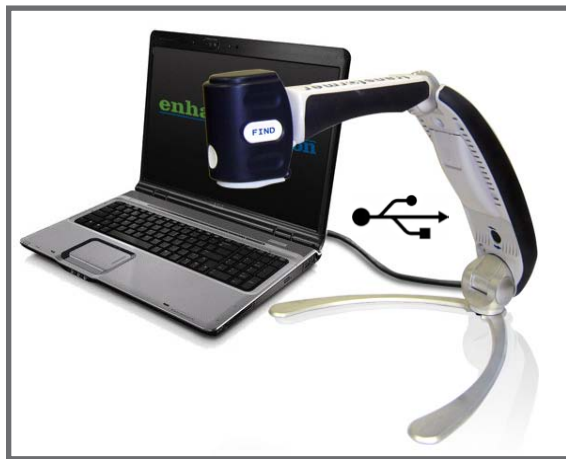


Figure 2

4. Unfolding the Transformer

- ▶ Keep the base of the unit on the flat surface. From the folded position gently pull the arm of the Transformer to a vertical position. (See Figure 2)
- ▶ Pull the arm that is connected to the camera head slowly to a horizontal position. (See Figure 3) Upon unfolding the Transformer the LED light and unit should automatically turn on.
- ▶ Once the unit is open, grasp the feet and move them away from each other. Next rotate the camera head toward the object you wish to magnify. (See Figure 4)
- ▶ To fold back to starting position repeat steps in reverse.



Figure 1

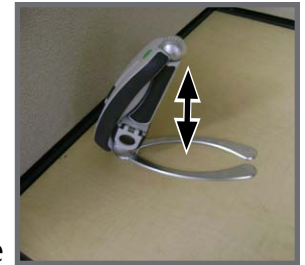


Figure 2



Figure 3



Figure 4

5. Turning the power on and off

The Transformer will always be off in the closed position. Upon unfolding the Transformer the LED light and unit should automatically turn on. If you wish to turn off the unit while it is still open, hold down the illuminated power button for 3 seconds until LED light and unit turn off. (See Figure 1)

Software installation

If this is your first time using the Transformer, use the following instructions to install the viewer software.

NOTE: If you have previously installed this software, the Viewer should automatically open once the USB is connected and the power is on.

1. Start up your PC as normal. Plug in the USB into your PC and the opposite end into your transformer.
2. If a pop-up window appears:
 - a) If you are operating on Windows XP or Vista click on EVViewer option on the pop-up menu (See figure 1), go to step 4.
 - b) If you are operating on Windows 7, select open files from the pop-up menu (See figure 2), go to step 3c.

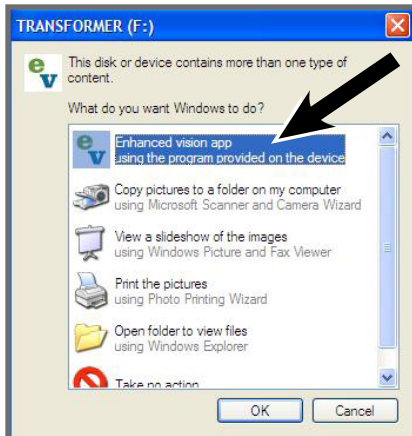


Figure 1

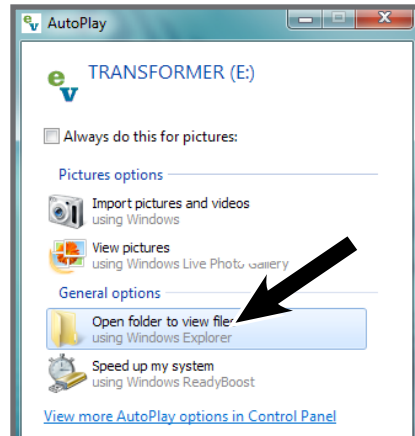



Figure 2

3. If a pop-up doesn't appear:
 - a) Navigate to your start menu and go to "My Computer" (See figure 3).
 - b) Once the "My Computer" is open, double click on the EV icon .
 - c) Double click the setup.exe to start the installer (See figure 4).

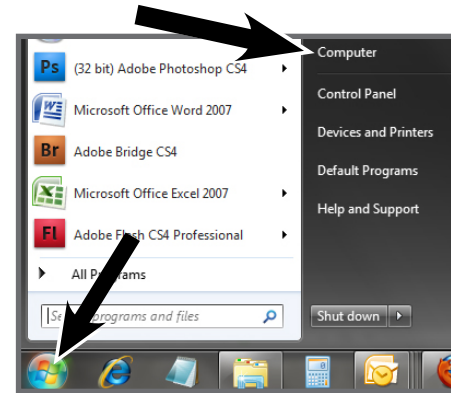


Figure 3

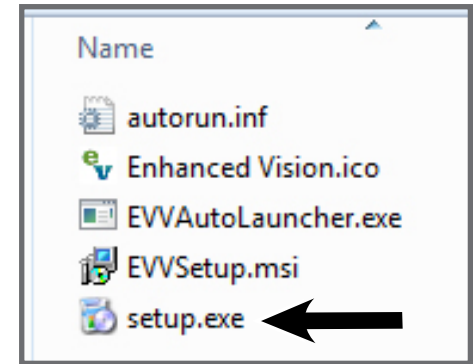


Figure 4

4. Once the Setup wizard appears on screen, click on the "Next" button (See figure 5).
5. Choose the destination folder to install the software and click on the "Next" button to continue the installation process (See figure 6).



Figure 5

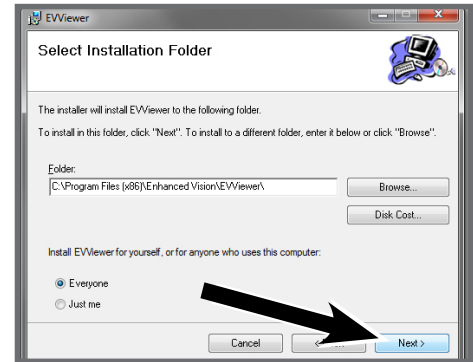


Figure 6

6. A ready to install screen will appear, click "Install" to continue the installation.
7. The software will start installing, this should take approx. 1 min.
8. Once the installation has fully completed, the viewer application will automatically open.

Keyboard Shortcuts

Switch	Keyboard	Comments
Zoom+	Up Arrow	Zooms in and navigates menu.
Zoom-	Down Arrow	Zooms out and navigates menu.
Freeze	F	This key acts as a toggle between live video and Freeze frame mode. When held for more than 3 seconds, the device will enter Menu.
	Escape	Enter menu.
Mode	M	This key shall toggle between the favorite color select modes. Selects menu items (Mode switch only) Holding this key for more than 3 seconds will restore to normal color mode.
	Enter	Select menu item.
LED on/off	L	The LED's are on automatically when the camera is in the open position. This switch provides the capability to switch on/off the LED's manually.
Find	Space bar	When the user holds this button the camera shall zoom to wide angle. When the user releases this button, the camera shall resume back to the zoom level that it was prior to pushing this button.
Rotate	R	When user activates this key the camera image will be rotated to accommodate left, forward, or right viewing position.
	F5	Captures the current image and saves it to a file (Saves to Documents folder as Default)
	F6	Open an image that was saved.
	F8	Change window position.
	Shift+Up/Down/Left/Right	Resize window while window position is active.
Activate Viewer	Ctrl+Alt+A	This will activate the viewer to allow keyboard shortcuts.

PACKAGE CONTENTS & CONTROLS

Please note the locations of the following controls on your Transformer:

- A. Camera:** Rotates 330°
- B. Lens Release:** Releases lens for distance viewing
- C. Camera Lens**
- D. Find Button**
- E. LED Light**
- F. Battery Compartment (Integrated Charger)**
- G. Rotate Button:** Rotates current image.
- H. Illuminated Power Button:** Turns unit on/off
- I. Mode Button:** Changes current favorite color mode
- J. Zoom Wheel:** Magnifies image, and navigates menu
- K. Freeze Button:** Freezes image on-screen
- L. USB Input**
- M. Power Supply Input Port (DC IN)**

Please refer to the illustrations on the next page to identify the package contents and controls of your Transformer. In addition to this users guide, you'll find the following items inside the box:

Accessories

1. Soft Carrying Case
2. Sleeve
3. AC Adaptor
4. Battery (*included inside Transformer*)
5. USB cable



USING THE TRANSFORMER

Now that your Transformer is installed and ready to operate we can focus on the ease of use, and functionality available to you.

Viewing Mode

The Transformer can be used to view objects at a distance, up close, or any where in between. To change viewing mode, simply turn the position of the camera by rotating it on the arm. Your Transformer has a memory feature that allows each viewing mode to be remembered by the 3 different viewing angles. The three viewing angles are:

- ▶ Distance Viewing
- ▶ Reading and Writing
- ▶ Self Viewing



Distance Viewing

Camera pointed away from Self w/ lens open



Reading and Writing

Camera pointed down at reading material w/ lens closed

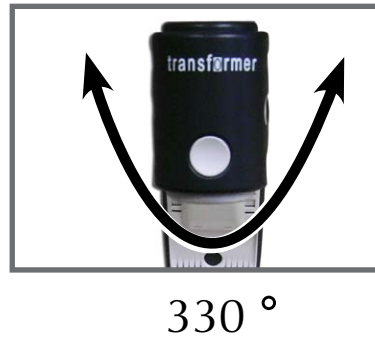


Self Viewing

Camera pointed towards Self w/ lens open

Adjusting the Viewing Mode

The Transformer Camera rotates 330 degrees, providing unsurpassed flexibility for the visually impaired. Do NOT force the camera beyond its 330-degree angular range as this may damage the unit.



Distance Viewing Mode

The camera can rotate forward to capture people, objects and scenery. Be sure to press the lens release button, and open the Reading Lens for Distance Viewing (See Figure 1).

The LED light should automatically turn off in this position. However, if you prefer for it to be on, simply press the illuminated power button.

NOTE: For the Transformer to be able to focus at all levels of magnification in distance mode, the object or target should be at least 3 or more feet away.

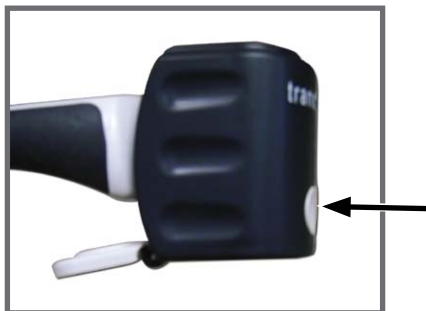


Figure 1



Figure 2

Reading and Writing Mode

The Camera can be adjusted downward for reading, writing and enjoying crafts or other hobbies (See Figure 1). This makes it ideal for classroom use. When the camera is rotated downward it is best to close the zoom lens for optimal viewing clarity.



Figure 1

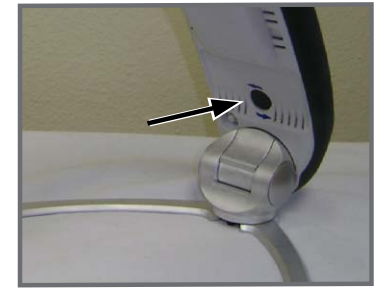


Figure 2

Viewing Position

While in Reading and Writing mode the Transformer has the flexibility to be used in three different positions, Right, Forward, and Left. For each different position simply press the rotate button (See Figure 2) until the image is displayed correctly on screen.

NOTE: The default viewing position is Right. The rotation cycle is as follows: Right, Forward, Left, Right.



Right



Forward



Left

Self Viewing Mode

The Camera can be rotated backwards to provide you with the equivalent of a full-length mirror. In this position, you can use the Transformer to help you put on make-up, shave or perform other personal hygiene. Be sure to press the lens release button, and open the Reading Lens for Self Viewing.

(See Figure 1)

The LED light should automatically turn off in this position. However, if you prefer for it to be on, simply press the illuminated power button.



Figure 1

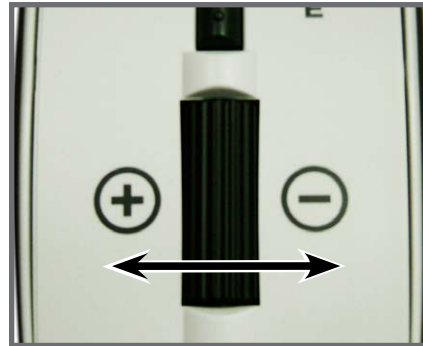


Figure 2

Adjusting Magnification

The Transformer offers a large range of magnification capabilities. The following directions can be used with the Zoom wheel (See Figure 2).

- ▶ To adjust the magnification scroll the Zoom wheel + or - until you reach your desired magnification.

NOTE: The extent of the magnification is dependent upon the distance of the Camera to the object.

Adjusting the Video Window Divider:

Press the [F8] function key on your PC keyboard to toggle the position of the on-screen camera window. Each press of the [F8] key will rotate the camera window position clockwise (left, top, right or bottom, or full screen). After cycling through all five camera window positions, pressing the [F8] key a sixth time will exit the camera viewing window, returning you to your full screen PC desktop. Pressing [F8] again will repeat all six screen rotation cycles in sequence (See Figure 1).

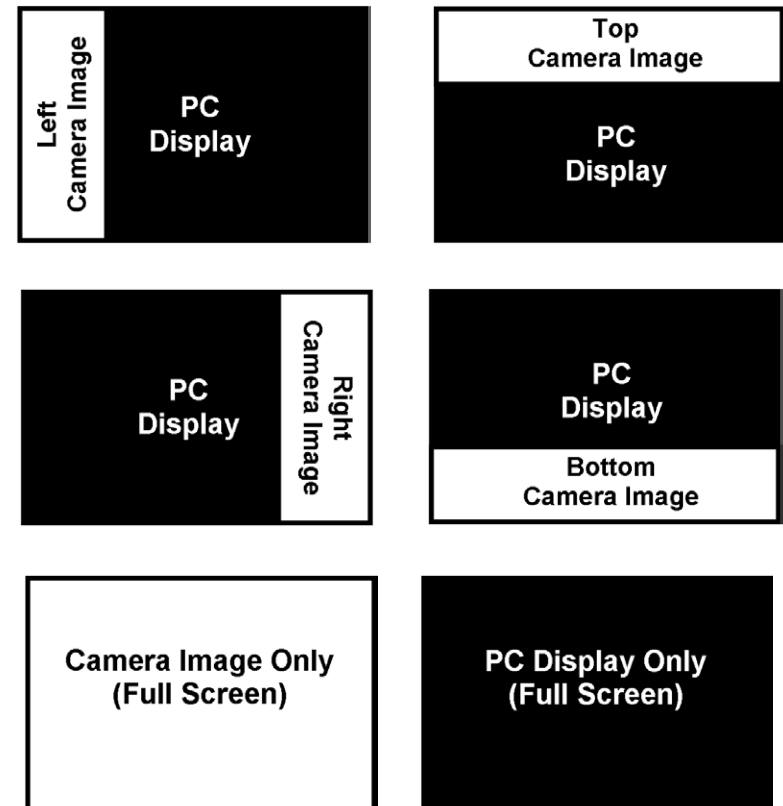
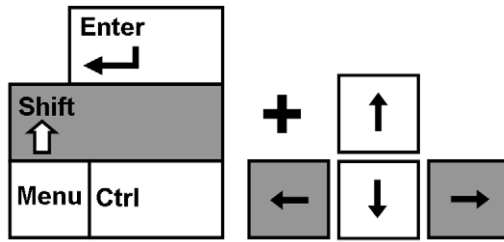


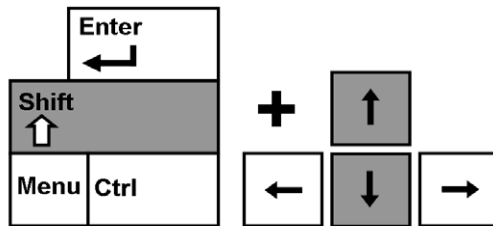
Figure 1

Once you've chosen the position of the on-screen camera image, use the following procedure to adjust the width/height of the video window divider, relative to your PC display:

- If the on-screen camera image is positioned to the left or right of your display, hold down the [SHIFT] button while pressing either the left or right arrow keys on your PC keyboard to increase or decrease the width of the video divider window. This adjustment is useful when viewing magnified documents side-by-side with your PC display.



- If the on-screen camera image is positioned to the top or bottom of your display, hold down the [SHIFT] button while pressing either the up or down arrow keys on your PC keyboard to increase or decrease the height of the video divider window. This adjustment is useful when viewing magnified documents above and below your PC display.



Capturing a Still Image:

The Viewer application allows you to capture a still photo (or "snapshot") of the camera image. This is especially useful in school or work settings, where it may be desirable to magnify and store text that is located on a distant object (i.e. chalkboard or dry erase board) and later recall the image (homework assignments, etc.). Use the following procedure to use the Image Capture feature:

- 1) Focus on either a near or distant object. The object viewed on the display will be captured as shown.
- 2) Press the [F5] function key on your PC keyboard to capture the still image. A standard "Save As" dialog box will appear on screen.
- 3) Select the directory in which you wish to store the file. If desired give the snapshot a descriptive file name. If no filename is entered, the default timestamp filename will be used. The image will be saved as a standard .JPEG file (Windows* JPEG).

Viewing a Stored Image:

- 1) Press the [F6] function key on your PC keyboard. to open a previously stored image. The standard "Open" dialog box will appear.
- 2) Choose the directory in which the stored file is located and select "Open" to view the image.

NOTE: The image will open in the Windows program you have currently set as your default picture viewer

Using Third-party Screen Magnification Software:

The Transformer viewer application can be used in conjunction with the following magnification software products:

- ▶ Dolphin SuperNova
- ▶ AISquared ZoomText
- ▶ Issist iZoom

While the Transformer Viewer application is running you may open up your third-party magnification software at any time to simultaneously run the software and the viewer application. Refer to the manual of your magnification software for detailed instructions on its usage.

In the interest of continuous product improvement, third-party software compatibility is subject to change without prior notice.

Using the Find

The Transformer Find feature can help you quickly identify where you are currently magnified on a page, or can easily locate a specific part of an object you want to view more closely.

NOTE: You cannot use object Find if you are magnified at 1x.

While magnified, press and hold down the Find button on the camera head (See Figure 1)

Figure 1



1. The Transformer will automatically zoom out to the widest field of view, and a "target" (as shown in Figure 2) will appear in the center of the monitor screen.
2. Move your work or reading material until you have located the desired item within the "target" area. (See figure 2)
3. Release the Find button, and it will magnify the item you located within the targeted area. (See Figure 3)



Figure 2



Figure 3

Using the Freeze Function

Freeze allows you to take a snap shot of what the Transformer is magnifying in order for you to have extended time to view the image. This is particularly helpful when taking notes in a classroom.

The following directions can be used to apply the Freeze mode using the Transformer only:

1. Press the Freeze button to activate Freeze mode (See Figure 1).
2. To release the Freeze mode, press any key or change the viewing angle.



Figure 1

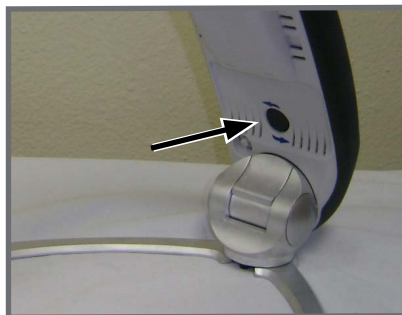


Figure 2

Using the Rotate Function

The Rotate function allows you to rotate an image on-screen (180° or 90°). You can use this function at any time. Simply Flip the image by pressing the Rotate button located on the underside of the arm. (See Figure 2) To rotate the image back to original position press the Rotate button again or change the viewing angle.

Color Select Mode

The Transformer was designed to provide optimum viewing for people with certain visual conditions by offering a range of choices in both text and background colors. Use the Mode key (See Figure 1) to toggle between full color viewing, enhanced positive, enhanced negative, and your 6 favorite color select modes. The 6 favorite color select modes can be modified to any of the 28 color select options by following the instructions provided on page 27.

NOTE: You are only allowed up to 6 favorites at any one time. However, you have the flexibility to change them at any time.

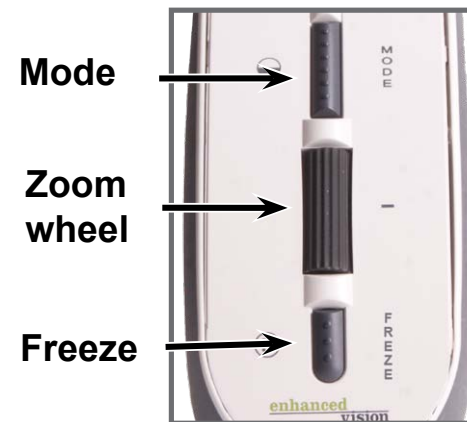


Figure 1

Upgrading Your Software

In the interest of continuous product improvement, updates to the Viewer software will be made available on the Enhanced Vision website at: <http://www.enhancedvision.com/transformer-update>. For assistance in locating and downloading updates, call the toll free support number, 1-800-440-9476.

Accessing the Menu

- ▶ You can access the menu by pressing and holding the Freeze button on arm of the Transformer for 3 seconds. .
- ▶ Once the setup menu shows on-screen, (See figure 1) use the Zoom wheel + or - to scroll through the functions. To activate one of the functions press Mode while it is highlighted.
- ▶ To exit at any time press Freeze button while setup menu is on-screen

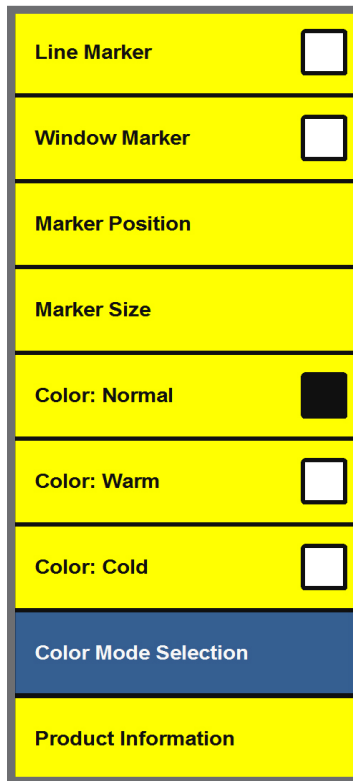


Figure 1

Enabling/Disabling Line & Window Markers

Line & Window Markers are used to frame an image between two horizontal lines. These lines may be used as a reading guide for long passages of text, as a guide to help keep your place as you move from one side of the page to the other, or just to make writing easier.

The following directions can be used to Enable/Disable Line & Window Markers

1. Press and hold the Freeze button for at least 3 seconds or until setup menu shows on-screen.
2. Scroll with the Zoom wheel + or - to Line Marker (See Figure 1) or Window marker (See Figure 2) and press Mode to Enable.
3. See page 21 for instructions on how to adjust the size and position of your Markers.
4. To Disable Line or Window marker, scroll with the Zoom wheel + or - to the Marker currently Enabled and press the Mode button or press Freeze at any time.

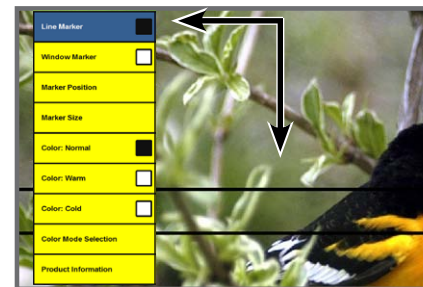


Figure 1

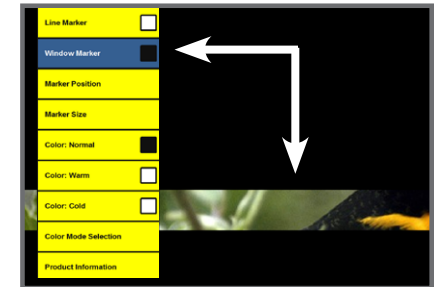


Figure 2

Adjusting the Size/Position of the Selected Marker

The following directions can be used to adjust the Size/Position of the Line or Window Marker:

1. Make sure the Line/Window marker is currently Enabled. (*Refer back to page 24 if you are not sure how to do this*)
2. To increase or decrease Line/Window marker size scroll with the Zoom wheel + or - to Marker size on the setup menu (See Figure 1) and press the Mode button.
3. Use the Zoom wheel + or - to increase or decrease the size of the Line/Window marker. To exit back to menu press the Mode button.
4. To move your Line/Window marker up and down, scroll with the Zoom wheel + or - to the Marker position (See Figure 2) and press the Mode button.
5. You can now scroll with the Zoom wheel + or - to move the Line/Window marker up and down. Press Mode button to exit out of scroll mode.
6. To exit Marker mode, go to the Line/Window Marker that is currently enabled and the press Mode button or press Freeze at any time.



Figure 1

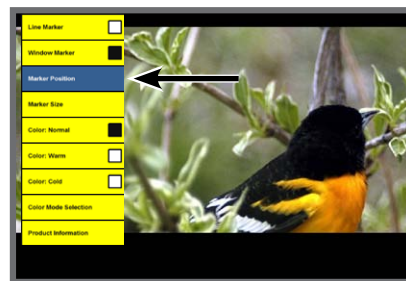


Figure 2

Adjusting the Color Balance

Color is often affected by the lighting used in a room. The Transformer Color Balance control allows you to achieve optimum clarity.

The following directions can be used to adjust the Color Balance:

1. Press and hold the Freeze button for 3 seconds until setup menu shows on-screen
2. Scroll with the Zoom wheel + or - and press Mode on the desired Color button. (See Figure 1)
 - ▶ Color: Normal automatically adjusts to the lighting in the room
 - ▶ Color: Warm casts a brighter yellow tone
 - ▶ Color: Cold casts a blue tone
3. To exit press Freeze button

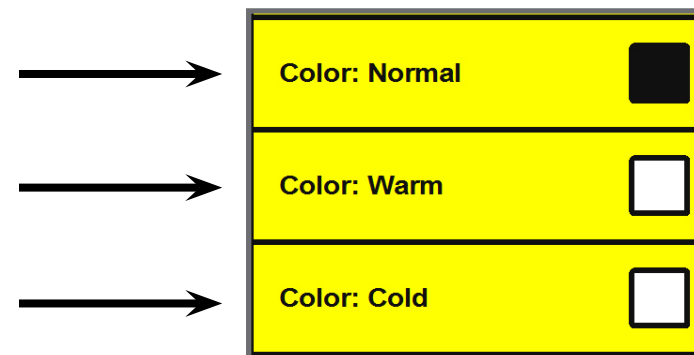


Figure 1

Changing Favorite Color Modes

The Transformer provides 28 selectable color modes, and allows selecting up to 6 favorites for use, as described on page 22. The following directions can be used to change the favorite color modes on your Transformer:

1. Press and hold the Freeze button for 3 seconds until the on-screen menu shows up.
2. Scroll with the Zoom wheel + or - to the color mode selection and press the Mode button. (See Figure 1)
3. You will see a sub menu showing the current color modes with a check box. (See Figure 2)
4. To change your color modes highlight one with a current check box, and deselect it by pressing Mode. (See Figure 3) Choose an alternative color mode.(You are only allowed up to 6)
5. Use the Next and Previous menu items to view more available color modes. (See Figure 3)
6. To exit use the Zoom wheel + or -, go to exit on the menu (See Figure 4) and press Mode. Or just press Freeze button to exit at any time.



Figure 1

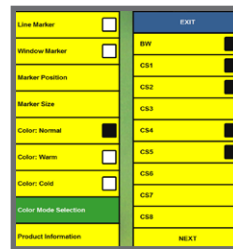


Figure 2

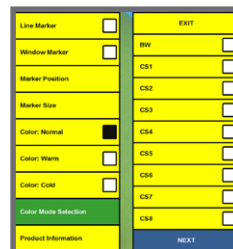


Figure 3

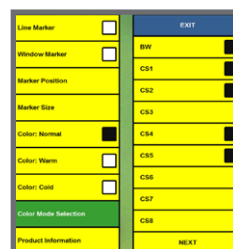


Figure 4

TROUBLESHOOTING

No power to the unit

*Can you power the unit using the included AC adaptor?
(Pages 10-11)*

Is the power supply properly connected to a surge protector or an AC outlet (mains)? (page 6)

NOTE: A Viewer software reset may be necessary in the event of a power surge.

Video image on Computer screen is blurry not clear or slow

Clean the LCD display and/or camera lens using a cleaning cloth.

Adjust the distance of the Transformer from your reading material or adjust the handle angle as needed to improve image quality (focus)

Try selecting different viewing modes to improve image quality (See Page 13)

NOTE: Having programs running in the background of your computer may affect the quality of the image and response time.

Video image on LCD display is too bright/dark

The Transformer is designed to be used in moderate lighting conditions, preferably indoors. Bright lighting (or direct sunlight) may produce shadows and/or reduce visibility. Try moving to a more shaded area to improve image quality.

Adjust the distance of the Transformer from your reading material or adjust the angle of the handle as needed to improve image quality (focus)

Try selecting different color modes to improve image quality (See Page 23)

Batteries will not charge

- ▶ Can you power the unit using the included AC adaptor? (Pages 10-11)
- ▶ Is the power supply properly connected to a surge protector or AC mains? (Page 6)
- ▶ Is the correct battery being used and does it need to be charged or replaced? (Page 11-12)

A Warning message is displayed on-screen

- ▶ *If you see a warning message appear on screen with a low battery icon, simply plug the Transformer into an available outlet with the AC power supply provided. The message should go away and the unit should charge.*
- ▶ If you see a warning message saying “Connect Enhanced Vision Device” (See figure 2). The power to your unit has either been manually shut off, the unit is not connected to the PC, or the battery has been drained. Make sure your Transformer is plugged into an outlet with the included AC power supply. If you still do not have power press and hold the illuminated power button (refer to page 10-11) until the image shows on screen.

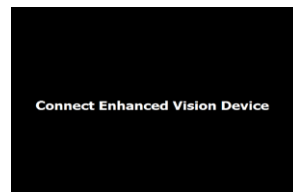


Figure 2

SPECIFICATIONS

Features:

- Lightweight, portable design
- 330° adjustable camera head
- 6 user favorite color modes (with 28 to choose from)
- 28 available color modes
- Magnification 2.45X up to 30X (Based on a 17” monitor)
- Image “Freeze” mode
- Integrated battery charger

Battery:

- D-Li1, Li-ion 2 Cell, 7.4V, 2,600mAh Rechargeable (included in package)

Camera: Digital CCD, Autofocus

Physical Dimensions:

~ 10”L x 3.65”W x 3.25”H (closed)

~ 13”L x 10.5”W x 9.25”H (fully extended in reading view)

Weight: ~ 1.7 lb. (with batteries installed)

Magnification Ranges: 2.45X up to 30X

17” LCD: 2.4 (minimum) – 30.0 (maximum)

19” LCD: 2.7 (minimum) – 33.5 (maximum)

17”/19” Field of View (Near Mode): 13.7 cm (min) : 1.12 (max)

17”/19” Working Distance (Near Mode): 17.5 cm

Warranty: 2 years

Indicator lights:

- Green solid = plugged in
- Green off = not plugged
- Red solid = full battery
- Red blinking = charging (if plugged in) or running from battery (if not plugged in)
- Red off = no battery

Environment:

- Operating Temperature : 32° – 104°F (0° – 40°C)
Humidity 10-90% (non-condensing)
- Storage temperature : -4° – 140°F (-20° – 60°C)

Estimated Charge times (using rechargeable battery):

~4 hours maximum

* Note: Only with use of Enhanced Vision Battery

Wall adapter:


- UL/CE rated
- Input: 100-240VAC 50/60Hz (0.8A Max) 
- Output: 9V DC, 2.5A
- Operation Temperature: 0 C – 40 C
- Relative Humidity: 10%-95%

Image:

- 28 Enhanced Contrast Modes
- Black and White
- Color
- Page Locator

To prevent condensation, do not use the unit for 1 hour after transporting the unit from extreme cold to room temperature.

***All times listed are approximate. Actual Charging and Usage times may vary depending on the life cycle remaining on the batteries, type and current rating of batteries used, LCD brightness setting, LED Mode and other variable factors.*

In the interest of continuous product improvement, specifications and/or minimum system requirements are subject to change without prior notice.

WARRANTY INFORMATION

Enhanced Vision Transformer Warranty Policy

Enhanced Vision products are designed to give you the highest quality image, convenient features, ease of use and reliable service. The Transformer has been inspected and tested prior to shipping. Enhanced Vision warrants the Transformer against defects in material and workmanship under normal use for two years from the date of original purchase. Enhanced Vision, at its option, will at no charge either repair the product or replace it during the warranty period. There are no other expressed or implied warranties accompanying this product.

This warranty policy does not cover:

- a) Defects or damage from misuse, use in other than normal and customary manner, accident or neglect;
- b) Defects or damage from improper operation, maintenance, installation, adjustment, alterations or modification;
- c) Defects or damage from spills of food or liquid;
- d) All plastic surfaces and all other externally exposed parts that are scratched or damaged due to normal use;
- e) Damage due to operation of the Transformer with equipment not supplied or designed by Enhanced Vision.

- ▶ You must provide proof of purchase, bearing the date of purchase, in order to receive warranty service.
- ▶ Anyone using this product does so knowingly assuming certain risks, due to the need to utilize vision enhancement devices.

Service Process

In the event that technical support or repair service is needed, please contact your local Enhanced Vision representative or the Enhanced Vision warranty service center. If warranty service is required, please contact Enhanced Vision at (800) 440-9476 Monday through Friday, between 8 a.m. and 5 p.m. Pacific Standard Time (PST) to request a return authorization number.

Warranty repairs will not be accepted without a valid return authorization number.

You may wish to keep the original product packaging in case warranty service is required. The manufacturer cannot provide packaging for warranty repairs.

NOTE: Please completely fill out and send in the enclosed warranty registration card.

OTHER ENHANCED VISION PRODUCTS



Merlin LCD – Easy to use!

Merlin LCD is a video magnifier that pivots and swivels to the most comfortable viewing position. This product includes all the same features as the Merlin but with a sleek ergonomic design. CE

Available in 19" or 22" LCD versions.
Magnification: 2.4X – 77X



Merlin LCD Plus – Computer compatible!

Merlin LCD Plus offers the same advanced features as the Merlin LCD but is also compatible with most computer workstations and offers a split screen mode. This mode lets the user view magnified images and computer files concurrently. The included foot switch and Split Screen Control Box provides line markers and window size controls. CE



Max - Powerful Magnifier

A powerful, low-cost magnifier for reading. Connects to any TV in seconds. Available in either Full Color or Black & White versions.

Magnification: 16X – 28X*



*Maximum limit depends upon display size

Flipper – The Ultimate in Flexibility!



Read, write, get more out of life! Our innovative camera design lets you magnify in almost any position with images in full color. Available in Color and Black & White Display Modes.

Magnification: 1X – 50X* (with optional stand)



*maximum limit depends upon display size

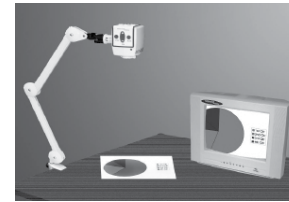
Flipper Panel – Integrated and Portable!



This powerful, portable magnifier integrates the Flipper 225-degree rotating camera with a slim, LCD platform. Powered by an innovative battery pack, the Flipper Panel runs up to 4 hours on a single charge. The discrete camera projects a full-color, auto-focus image on the screen for both near and distance viewing.



Magnification: 1X – 26.4X (with optional stand)



Acrobat – Low Cost meets Portability!

The Acrobat's innovative rotating camera design enables people with low vision to perform daily tasks more effectively. By rotating the camera, the user can read, write, self-view, and magnify images at any distance. The full color, auto-focus Acrobat features a removable camera head and connects to any TV or VGA monitor in seconds. Now available in either long arm or short arm configurations.



Magnification: 2X – 72X*

*Maximum limit depends upon display size



Acrobat LCD



With your choice of a built-in 19" or 22" LCD, the Acrobat is a 3-in-1 video magnifier ideal for near, distance and self viewing. By rotating the camera, you can read, write, groom, and magnify images at any distance. The Acrobat LCD offers a complete system for those at work, school or home

Magnification: 2X – 65X (19" LCD)
Magnification: 2X – 75X (22" LCD)



Amigo – Your Portable Friend!



Amigo is a truly portable desktop magnifier and is the lightest weight in its class. Optimal viewing is achieved with a tilting 6.5 inch viewing screen. Amigo is battery operated and can be taken anywhere.



Magnification: 3.5X – 14X (digital)

enhanced vision

The Transformer video magnifier is designed to enlarge and enhance images to improve the lives of people who have low vision. The extent to which Transformer can improve the ability to see images and text depends on a person's individual condition and level of visual impairment. The Transformer is not designed to restore vision, correct eye conditions or have degenerative vision loss. An eye care professional can best determine the suitability of the Transformer for a patient's specific condition. For more information, please visit www.enhancedvision.com.

www.enhancedvision.com

(800) 440-9476 (US Office, toll-free)

+44 (0)115 9442317 (UK Office)

+49 (0)6691 911588 (DE Office)

Part # MAN-1210-00 Rev. X1

October, 2010

Copyright © 2009 by Enhanced Vision. All rights reserved.
Product specifications subject to change without prior notice.